



# Social Work Field Education

## Signature Pedagogy E-Newsletter



December  
2011

During Fall 2011, 70 Social Work students enrolled in Field Placement and Seminar course and provided over **14,000** hours of invaluable service to community agencies. In Spring 2012, over 50 students have applied to enter field education.

**Field  
Director's  
Message**

### In this issue:

Korea Association of Social Workers	2
HIV Disclosure Global Policy	3
Students' Research Presentations	3
National Research Announcement	4
Special Thanks	4
Field Education Faculty and Staff	4

### Social Work Student Field Orientation Meeting



Since the Council on Social Work Education's last site visit in 2005, the Field Office has experienced a drastic increase in students requiring internships — from 30 in Spring 2005 to over 50 in Spring 2012.

On December 7, 2011, Director of Field Education, Dr. Selena T. Rodgers facilitated the group field orientation meeting for students scheduled to enter SCWK 410 in Spring 2012. Group orientation is the initial opportunity for students to learn about Field Placement and Seminar, and to sign the "Field Education Student Agreement" which delineates the Social Work Program's expectations for professional performance behaviors at field internships. Interviewing skills were also explored. Assistant Director of Field Education, Nicole Benjamin (York Alumna) scheduled individual pre-placement meetings with students in order to review field applications, assess learning needs, and assign respective agencies. Adjunct Assistant Professor Parthenia Brown (York Alumna), a field seminar instructor was also in attendance.

Dr. Michele Gregory, member of York College's Sexual Harassment Committee, provided a PowerPoint presentation to attendees about sexual harassment policies (quid pro quo and hostile work environment). Case examples were also discussed. For additional information see The City University of New York Sexual Harassment policy at: [http://portal.cuny.edu/cms/id/cuny/documents/level\\_3\\_page/001178.htm](http://portal.cuny.edu/cms/id/cuny/documents/level_3_page/001178.htm)

Submitted with kind regards,

*Dr. S.T. Rodgers*

The Social Work Field Education E-Newsletter was established in December 2010 to share relevant information about field education, the Program, and trends in the Profession. The E-Newsletter is issued bi-annually to the cadre of participating field instructors — the heart of York's social work program.

## The Seoul Connection: Korea Association of Social Workers



Center photo: Dr. Selena T. Rodgers (Assistant Professor/York College, The City University of New York) and President Sung-Chul Cho (Korea Association of Social Workers)

On November 8, 2011, Dr. Selena T. Rodgers, Assistant Professor of Social Work, at York College of The City University of New York, was invited to serve as the United States representative at the *Meeting the Challenge of Social Service Delivery International Symposium* in Seoul, South Korea. The Symposium was co-organized by Gyeonggi Welfare Foundation and Korea Institute for Health and Social Affairs as an urgent call to the United States, Korea, Japan, New Zealand, and Sweden to offer recommendations to improve the social welfare system in Korea.

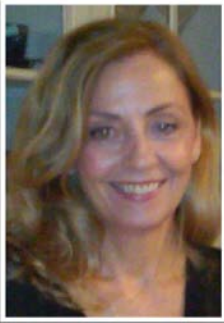
During her stay in South Korea, she was invited by the Korea Association of Social Workers (KASW) President Sung-Chul Cho to visit with him. President Cho and Dr. Rodgers – social workers with a passion for the profession – exchanged information about social work roles at the national and international levels, the need to expand diversity of social work fields and titles, licensing for social workers, and social work field education. They also discussed possible opportunities to host President Sung-Chul Cho for a visit to the United States. Korea Association of Social Workers boasts a membership of over 60,000 throughout Korea. As per the York College Office of Institutional Research and Assessment, 36 students identified themselves as being from South Korea in the Fall 2011 semester. York College of the City University of New York which is located in Queens County is the most ethnically diverse borough in the nation.

Professor Rodgers was also invited by President Sung-Chul Cho to address slightly more than 50 Chongam University social work students. She talked with the students about domestic and global roles of social workers, the charge to help individuals move towards well-being, her passion for social work, and York College Social Work students' field education internship experiences. The international social work students enthusiastically thanked Professor Rodgers for her presentation. Translation was provided by KASW Manager, Soo-Jung Kim (seen in above photos).

Dr. Rodgers shared highlights from her trip abroad with the students enrolled in *Introduction to Social Work* and *Social Research Methods* courses. She also offered the following recommendations: (1) Embrace every experience as a learning opportunity, (2) Prepare your professional agenda with a long-term purpose in mind, (3) Connect course readings and assignments with professional experiences, and (4) Read about national and global trends, cultures and traditions.

In sum, Dr. Rodgers described her three-day stay in Seoul, Korea as a breath-taking, cross-cultural experience filled with progressive discussions about the discourse of Korea's social welfare system, zealous hospitality and accommodations, and authentic Korean cuisine.

## Dr. Susan Letteney Co-Author's Global HIV Policy



Dr. Susan Letteney, Professor of Social Work at York College of the City University of New York, recently co-authored the *Guideline on HIV Disclosure Counseling for Children up to 12 Years of Age*, which was commissioned and published by the World Health Organization in December, 2011. She has been conducting studies and publishing articles on HIV disclosure for the past 14 years. This social problem emerged from her social work practice with HIV positive mothers during a time when children were orphaned and placed in foster care because of a parent's death from HIV or AIDS.



Disclosure of HIV status is an important part of the process of living with HIV, and is crucial to continuum of HIV care. Disclosure decisions are particularly complex when children are involved because of concern about children's emotional ability to understand and cope with the nature of the illness, stigma, family relations and concerns about social support. Caregivers and social workers are often uncertain about when, if and how to disclose, and opportunities to help families start the discussion about living with HIV are often missed.

Until now social workers and other health care workers have had no policies to inform them on the benefits or limitations to children on HIV disclosure. Clinicians now have official guidance for healthcare workers on how to support children 12 years of age and younger and their caregivers, on disclosure of HIV status. The guidance is intended as part of a comprehensive approach to the physical, emotional, cognitive and social well-being of a developing child following the child's own diagnosis of HIV or that of a parent or close caregiver. The report is based on empirical evidence of HIV disclosure to children. It will be distributed worldwide by WHO. For a copy of the report, visit: [http://www.who.int/hiv/pub/hiv\\_disclosure/en/index.html](http://www.who.int/hiv/pub/hiv_disclosure/en/index.html)

## Dr. Rodgers' Students Present Research Poster Board Projects



On December 8, 2011, 30 students enrolled in Dr. Rodgers' Social Research Methods II course enthusiastically presented their research poster boards to each other and social science faculty. The 14-week long experiential learning assignment offered social work, sociology, and anthropology students the opportunity to actively use research skills and knowledge, engage in peer discussions, evaluations, and work collaboratively. Faculty members who observed the presentations described students' projects as insightful, purposeful, professional, and an enriching learning experience.

## York's Social Work Program

Email address: [socialwork@york.cuny.edu](mailto:socialwork@york.cuny.edu)

Website: [york.cuny.edu/social\\_work](http://york.cuny.edu/social_work)

Face Book Page:

<http://www.facebook.com/#!/groups/172573566140056/>

## National Research Announcement

Do you have a MSW degree? Do you have experience supervising undergraduate students? Interested in sharing your experience? If so, please visit: <https://www.surveymonkey.com/s/SWsupervisors>

## Social Work Resources

Bureau of Labor Statistics, Occupational Outlook Handbook, 2010-2011 Edition: <http://w.bis.gov/oco/ocos060.htm>

Center for Clinical Social Work: <http://ww.centercsw.org>

Council on Social Work Education <http://ww.csew.org>

Dorothy I. Height and Whitney M. Young, Jr. Social Work Reinvestment Act: <http://ww.socialworkreinvestment.org/SWRA/>


National Association of Social Workers: <http://ww.socialworkers.org>

Social Work Insurance: <http://www.naswinsurance.org/pdf/PLIStud-WS0304.pdf>

Social Work Examination Preparation: <http://ww.socialworkerexam.com/>  
<http://www.lmswexambootcamp.com/>

## Special Thanks

The Field Office faculty and staff offer a special thanks to the Social Work Supervisors for mentoring our students. Isabelle Hubert, CUNY Office Assistant 2/Social Work Program for her unwavering administrative support.

Important Dates	Spring 2012 Schedule
	12/07 ~ Student orientation for 1st year practicum students
	12/15 ~ Fall 2011 semester ends
	01/27 ~ Spring 2012 begins (note: SWCK 492 students begin January 3, 2012)
	02/15 ~ 1 <sup>st</sup> Group Meeting with Field Faculty & Orientation for <u>First Time</u> York College Supervisors (ONLY for those supervisors who are supervising social work students for the first time) 9:30 - 11:30 (Room 3A10)
	03/14 ~ 2 <sup>nd</sup> Group Meeting with Field Faculty for ALL supervisors 9:30 - 11:30 (Room 3A10)
	04/18 ~ 3 <sup>rd</sup> Group Meeting with Field Faculty – for ALL supervisors 9:30 - 11:30 (Room 3A10)
	04/18 ~ Field Education Advisory Council Meeting 11:30 - 1:30 (Room 3A10)

## Field Education Faculty and Staff - 170 Years of Social Work Expertise

	Director of Field Education	Field Seminar Instructors	Social Work Program Office of Field Education
C O N T A C T  U S	<p>Selena T. Rodgers, PhD, LCSW-R <a href="mailto:strodgers@york.cuny.edu">strodgers@york.cuny.edu</a></p> <p><b>Assistant Director of Field Education</b></p> <p>Nicole Benjamin, MSW, LCSW-R <a href="mailto:nbenjamin@york.cuny.edu">nbenjamin@york.cuny.edu</a></p>	<p>Parthenia Brown, MSW, LMSW <a href="mailto:pbrown@york.cuny.edu">pbrown@york.cuny.edu</a></p> <p>Marcia Edwards, MSW, LMSW <a href="mailto:edwards@york.cuny.edu">edwards@york.cuny.edu</a></p> <p>Lianna Lee, MSW, LCSW-R <a href="mailto:llee@york.cuny.edu">llee@york.cuny.edu</a></p> <p>Shirell, Roeback, MSW, LMSW <a href="mailto:sroeback@york.cuny.edu">sroeback@york.cuny.edu</a></p> <p>April Williams, MSW, LMSW <a href="mailto:awilliams@york.cuny.edu">awilliams@york.cuny.edu</a></p>	<p>Social Sciences Department School of Health and Behavioral Sciences York College The City University of New York Room AC - 3A06-A 94-20 Guy R. Brewer Blvd. Jamaica, NY 11451 New York</p>

Mentor a student today to become an emerging social work leader tomorrow...

If you are interested in supervising a York College Social Work student, please email Dr. Rodgers at [strodgers@york.cuny.edu](mailto:strodgers@york.cuny.edu)