

EVACUATING DISABLED PERSONS

Techniques for evacuating disabled persons vary with the nature of the disability. If a person with a disability cannot evacuate, they should be moved to a designated enclosed fire stairwell that is a good distance away from the hazard.

Designated disabled emergency evacuation areas have been established and are clearly marked "Disabled Staging Area" in the following locations.

A-Core Building:

- Lower Level – LB Corridor Inside Stair #7 and LF Corridor Inside Stair #4
- 1st Floor – 1D Corridor in Front of Cafeteria (Handicap Ramp Situated at Liberty Ave entrance/exit on 1st floor)
- 2nd Floor – 2D Corridor in Stairwell #2
- 3rd Floor – 3D Corridor Next to Stair #2, 3F Corridor Next to Stair #3 & Inside of Library Next to Stair #9. 3H Corridor next to Stair #11
- 4th Floor – 4F Corridor Next to Stair #3 and 4M Corridor Next to Stair #8

Classroom Building:

- Stairway adjacent to the elevator.

Science Building:

- Stairway adjacent to the elevator.
- Lower Level Exit to Evans Road

HPE Building:

- Lower Level Exit to South Field

Public Safety maintains class schedules and office locations of all disabled students who may require assistance when evacuating. Public Safety Officers will check these locations along with the "Disabled Staging Area" during evacuations.

Always ask a disabled person how you can help before giving emergency evacuation assistance. Ask how they can best be assisted or moved, and if there are any special considerations or items that need to come with them.

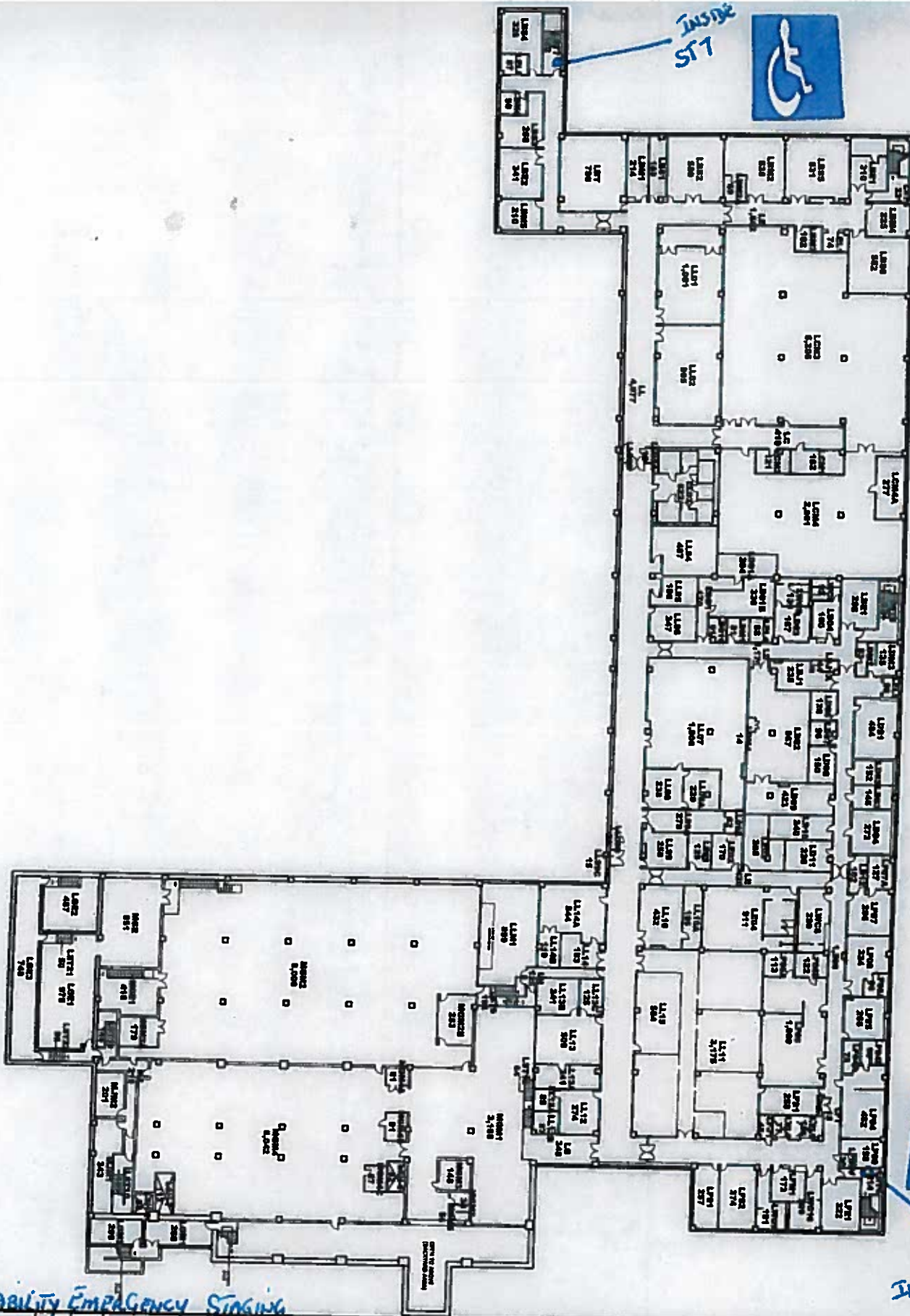
- ◆ For persons with mobility impairments, it may be necessary to help clear the exit route of debris, if possible.
- ◆ For persons with a visual disability, give verbal instructions while assisting in an evacuation. Do not grasp a visually impaired person's arm. Ask if he or she would like to hold your arm as you exit, especially in crowds or debris covered areas.
- ◆ For persons with auditory disabilities, get the attention of the person by touch or eye contact. Gestures and pointing are helpful, but be prepared to write a brief statement if that person does not seem to understand.
- ◆ Do not use elevators unless authorized by FDNY personnel.
- ◆ Do not attempt a rescue evacuation unless you had rescue training or the person is in immediate danger and cannot wait for professional assistance.



CALL PUBLIC SAFETY 714-247-8222

**EVACUATION
ASSEMBLY
AREA**

onal
ement



Disability Emergency Staging

ACADEMIC CORE YORK COLLEGE

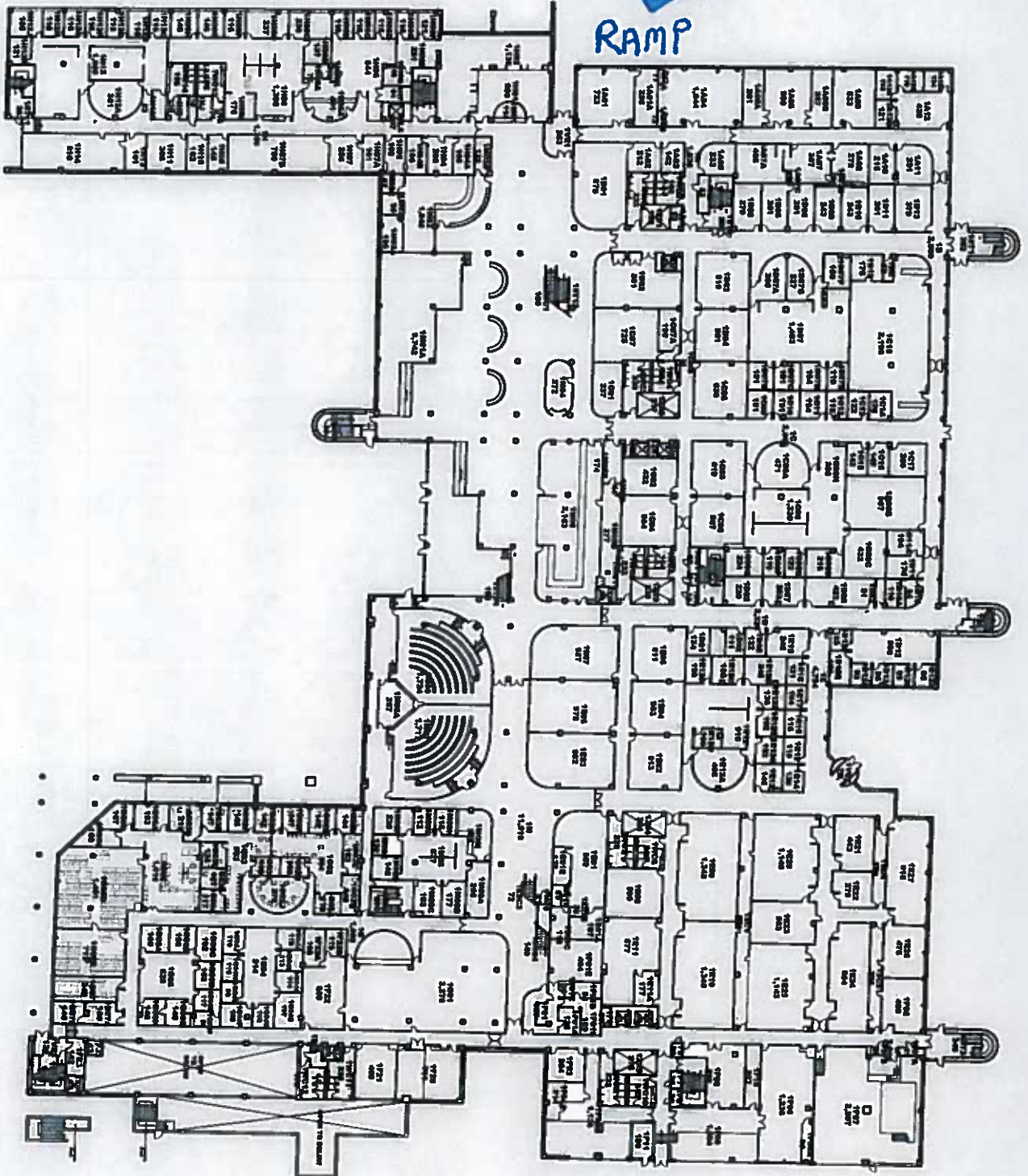
LWR LL - AT ST4 & ST7

Not To Scale
 DATE OF REVISION:
 JANUARY 2014
 DRAWING FILE NO.
 YORK-AC-LL

YU
 The City
 University
 of New York
 FACILITY PLANNING AND
 CONSTRUCTION MANAGEMENT
 250 WEST 57TH STREET 8TH FL.
 NEW YORK, N.Y. 10019



RAMP

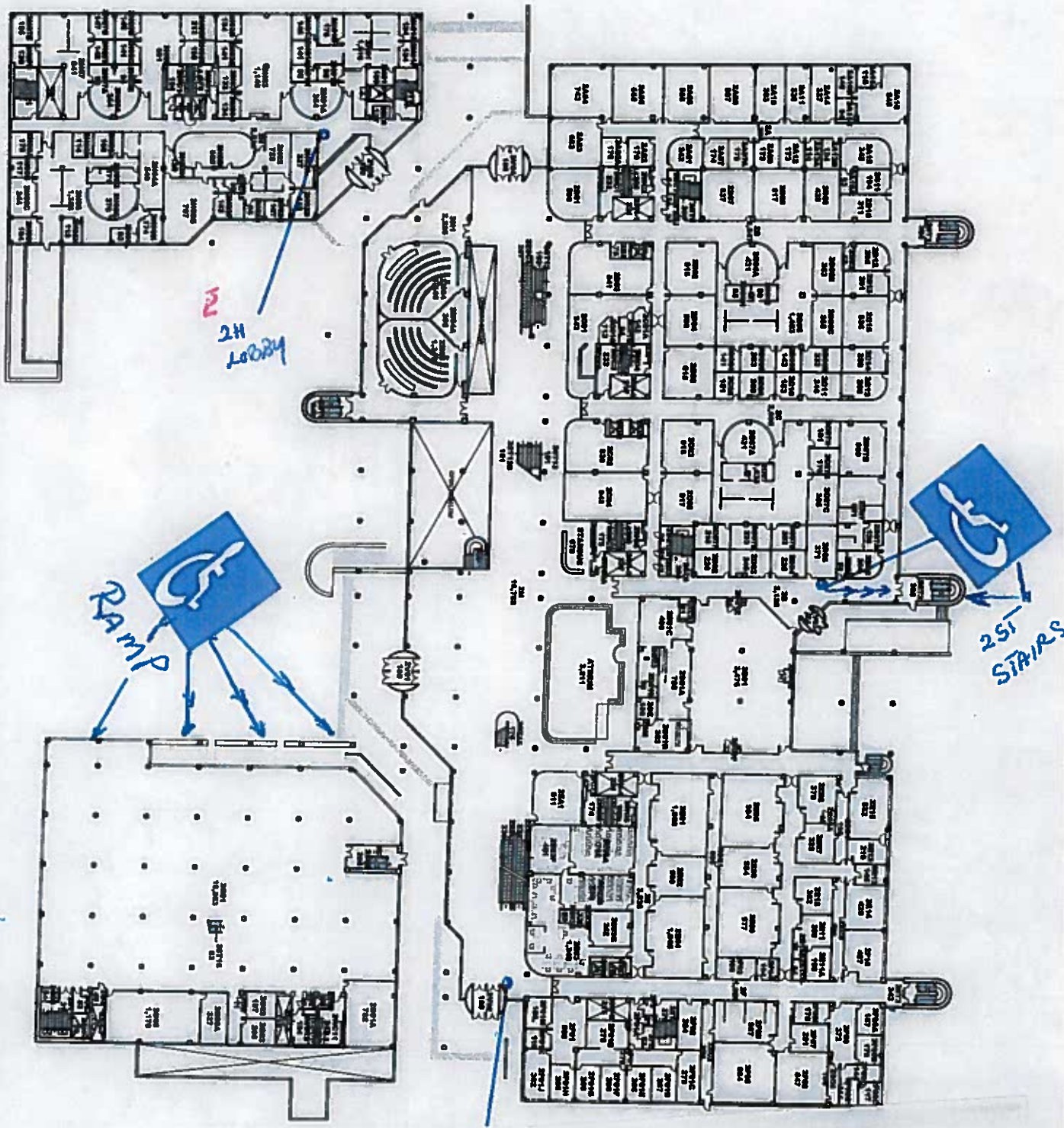


Facilities Planning and Construction Department
333 West 27th Street, 8th Fl.
New York, N.Y. 10001

ACADEMIC CORE YORK COLLEGE

Drawing Title
FIRST FLOOR PLAN

SCALE
Not To Scale
DATE OF REVISION
JANUARY 2014
DRAWING FILE NO.
YORK-AC-01



DISABILITY EMERGENCY STAGING

2M, 2D

Not To Scale
 Date of Revision:
JANUARY 2014
 YORC-AC-02

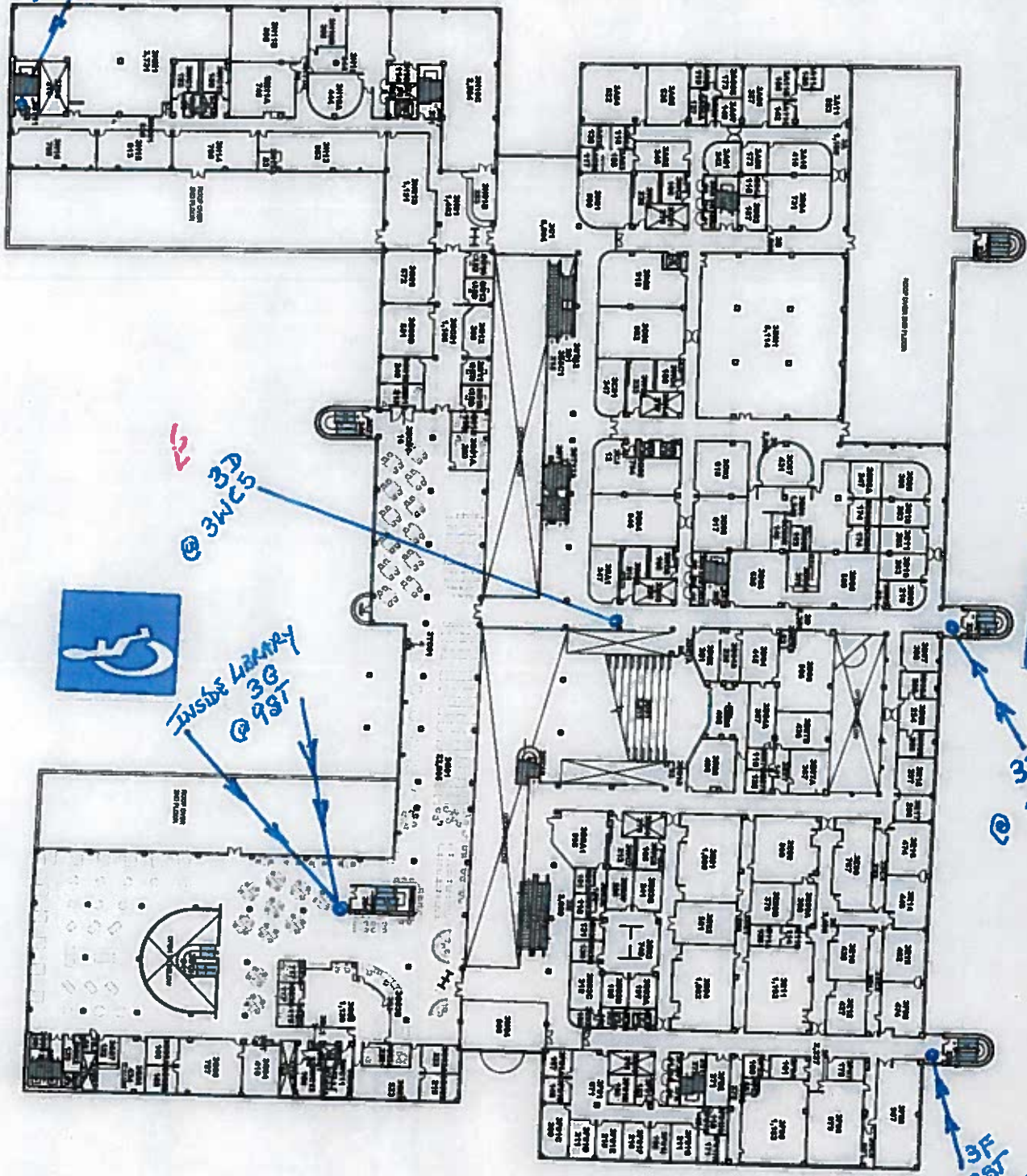
SECOND FLOOR PLAN
 YORC-AC-02

ACADEMIC CORE

YORK COLLEGE

CU
NY
 The City University of New York
 DEPARTMENT OF SPECIAL PLANNING
 AND CAPITAL BUDGET
 590 NASSAU ST., 15TH FLOOR
 NEW YORK, N.Y. 10019
 (212) 904-6044

3H
INSIDE ST 11



INSIDE LIBRARY
3G
3E
3F



3F
3E
3D



3D
3E
3F

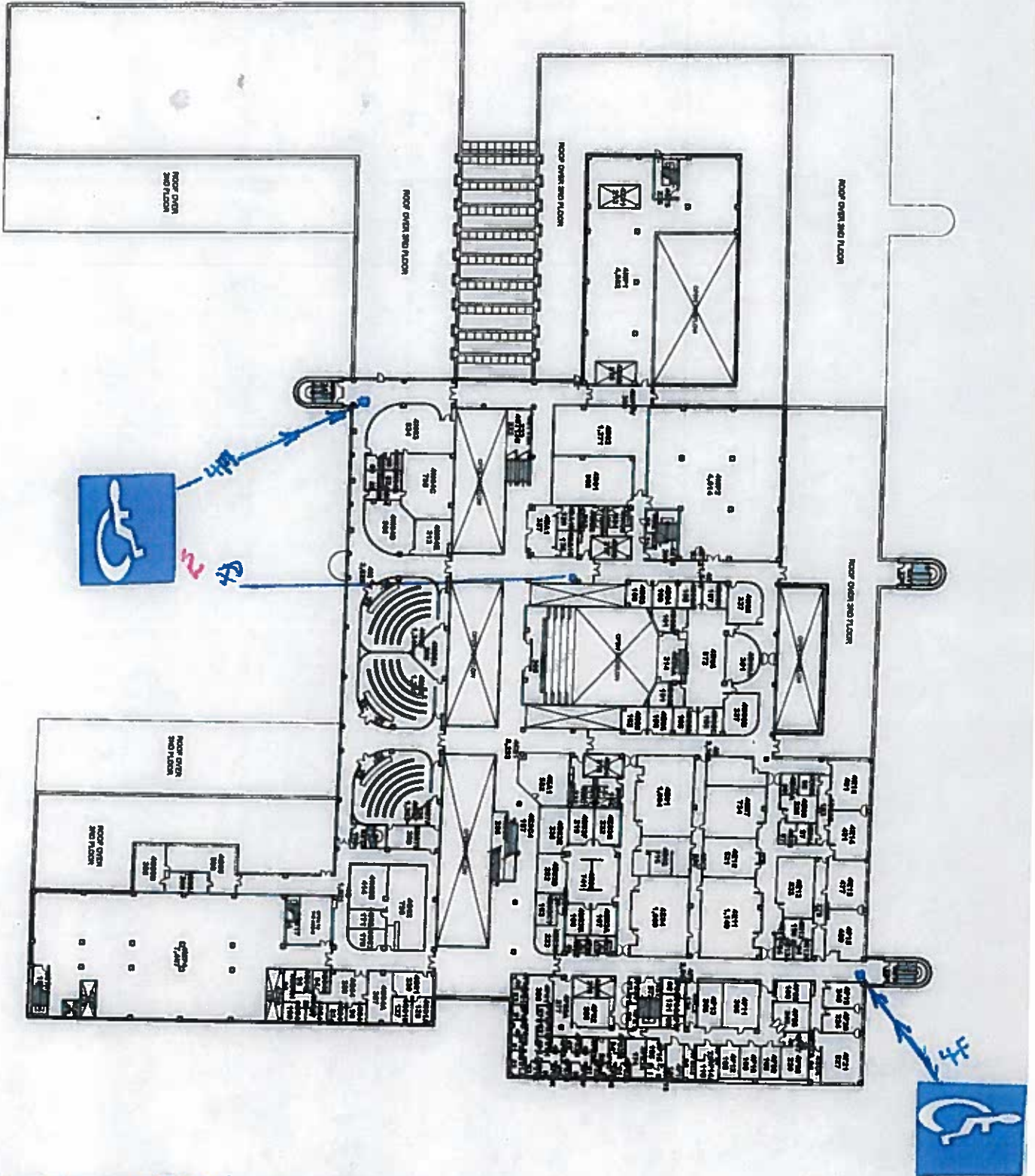
DISABILITY EMERGENCY STAGING 02/16/16

Not To Scale
JANUARY 2014
YORK-AC-03

ACADEMIC CORE YORK COLLEGE

3D, 3F, 3H, 3G

The City of New York
UNIVERSITY OF THE CITY OF NEW YORK
CONSTRUCTION MANAGEMENT
230 WEST 57TH STREET 10TH FL.
NEW YORK, N.Y. 10019



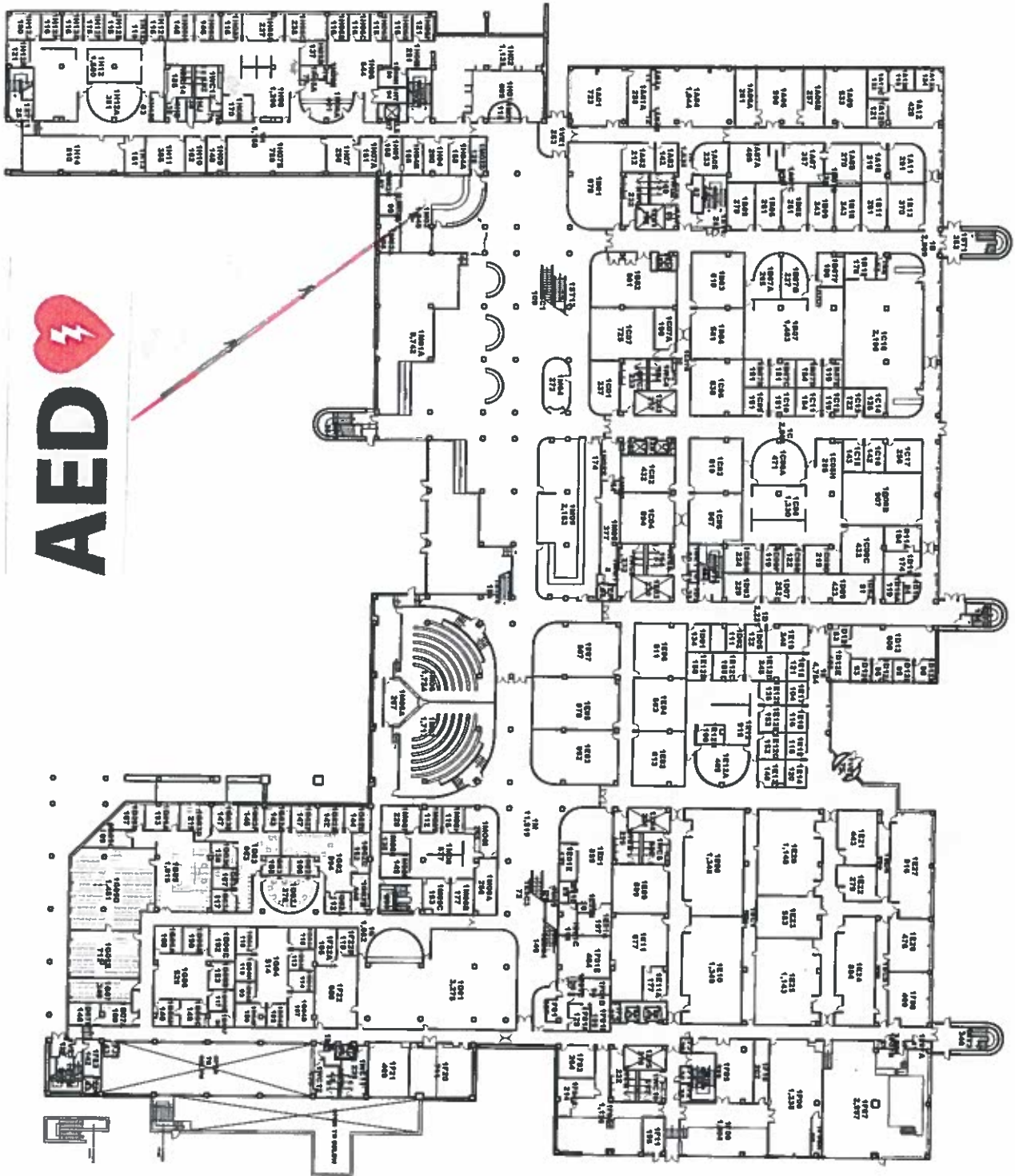
Disability Emergency Staging 02/16/16

4F R 4M

Drawn (FZ):
FOURTH FLOOR PLAN
 Title:
Not To Scale
 Date of Revision:
JANUARY 2014
 Drawing File No.:
YORK-AC-04

ACADEMIC CORE
YORK COLLEGE

CU
NY
 The City
 University
 of
 New York
 Department of Special Programs
 and Capital Budget
 325 West 37th Street 8th Fl.
 New York, NY 10018
 (212) 246-6424



ACADEMIC CORE YORK COLLEGE



FACILITIES Planning and
CONSTRUCTION Management
355 WEST 57TH STREET 10TH FL.
NEW YORK, N.Y. 10019

DRAWING TITLE
**FIRST
FLOOR
PLAN**

SCALE

Not To Scale

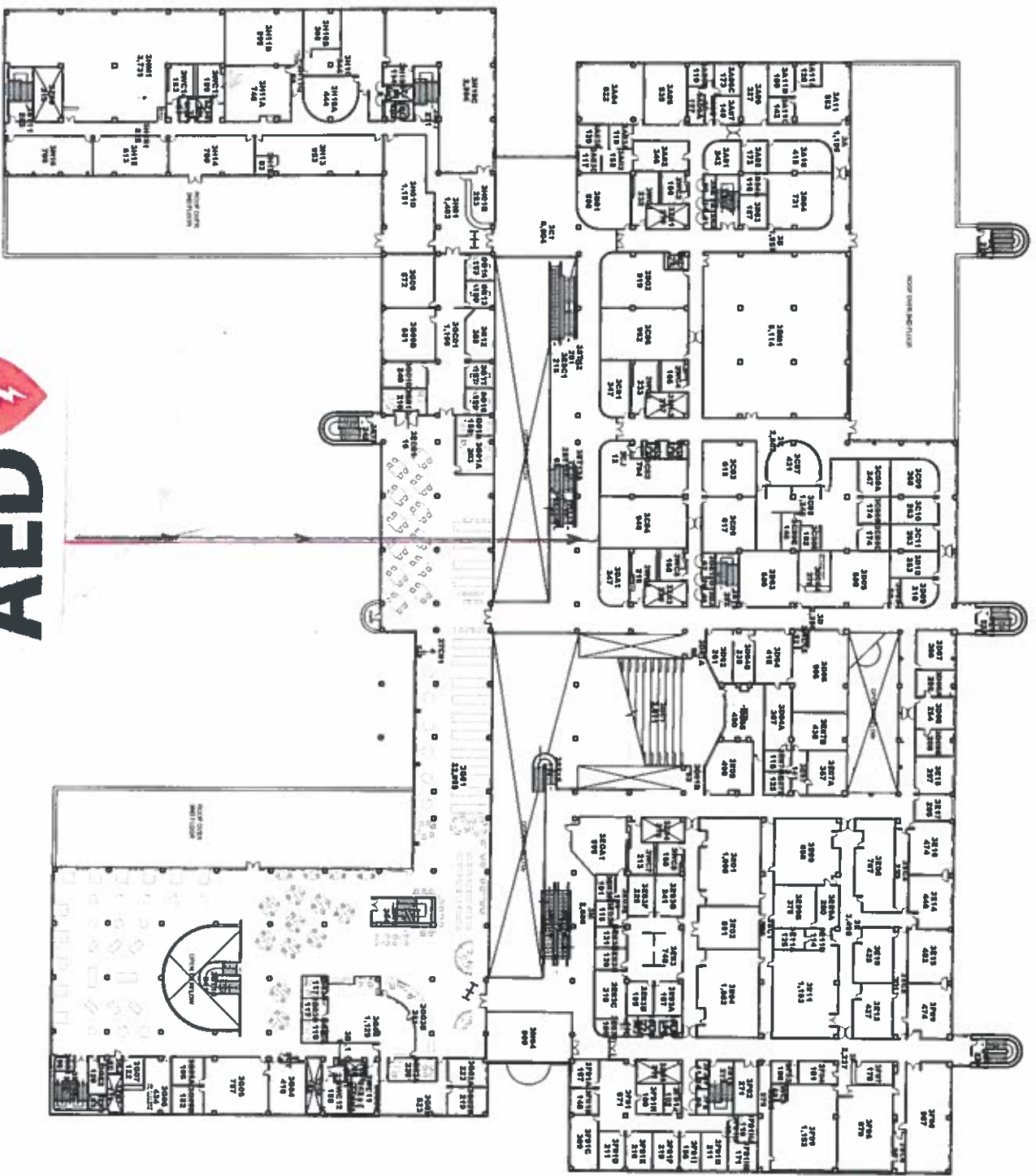
DATE OF REVISION

JANUARY 2014

DRAWING FILE NO.

YORK-AC-01

3rd Floor. On wall outside AC-3D01A opposite Stairs # 3ST13A.



DRAWING TITLE
THIRD FLOOR PLAN
 DATE OF REVISION
Not To Scale
 DRAWING FILE NO.
YORK-AC-03

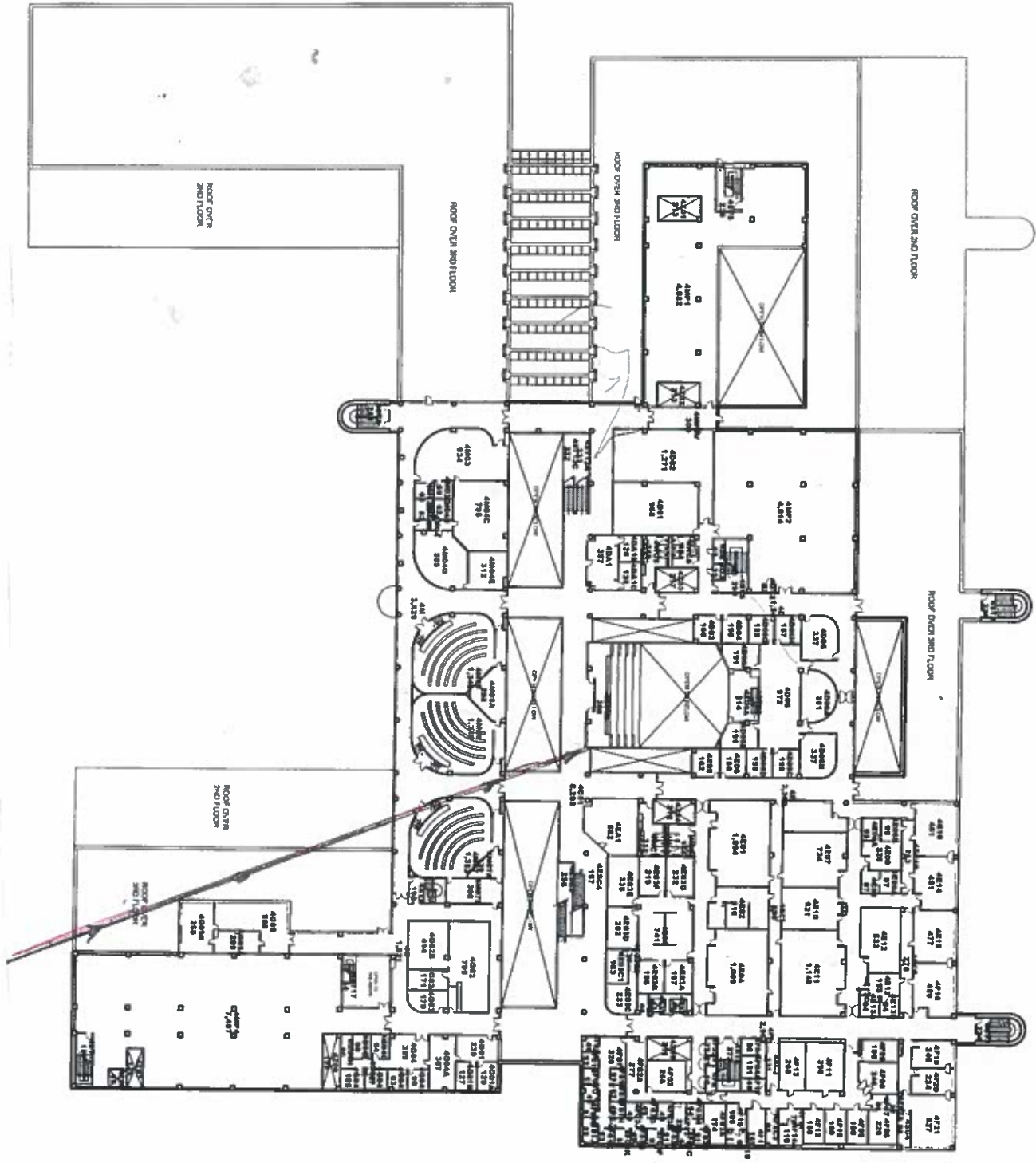
ACADEMIC CORE YORK COLLEGE


EASTERN PARKWAY AND
 CONSTRUCTION BUILDING
 535 WEST 87TH STREET (R-11)
 NEW YORK, NY 10024



AED

4th Floor. On wall (north side) right of exit door of 4E06B.



 <p>The City University of New York Department of Safety Planning 440 Central Road 950 West 57th Street 10th Fl. New York, N.Y. 10019 (212) 541-0420</p>	<h2>ACADEMIC CORE</h2> <h3>YORK COLLEGE</h3>	<p>ENCUMBRANCE TITLE FOURTH FLOOR PLAN</p>	<p>SCALE Not To Scale</p> <p>DATE OF REVISION JANUARY 2014</p> <p>DRAWING FILE NO. YORK-AC-04</p>
---	--	---	---